



EPT20-30RT(S) EPT20-35RT(S) Electric Pallet Truck 3.0/3.5t

Pallet Truck with Higher Speed and Greater Capacity;
Provides an ideal choice for Super-tough Working Conditions;
Maximum Capacity Reaches 3.5T and Driving Speed up to 12KM/H;
Dual Pallet Forks Option Doubles Material Handling Efficiency.

EP EQUIPMENT CO.,LTD
www.ep-ep.com

FEATURE



Performance

- The innovative AC system offers strong power, accurate control, excellent performance.
- High strength vertical gearbox, longer working life.
- Low-noise but durable hydraulic unit, good quality cylinder as well as hose ensure the high reliability of hydraulic system.
- AMP connector and durable electric wires greatly reduce malfunctions of components.
- Super high intensity frame design supports high speed, high capacity and long distance applications.
- Adjustable long push rod ensures the stability and lifespan of the truck.

Safety

- Moving parts are far from operator to avoid accidents.
- Operator can freely switch between high speed/low speed switch, by which safety and reliability are greatly enhanced.
- Dual protection arm can assure the operator to be protected in any standing position.
- Emergency reverse belly button protects operator from getting hurt.
- Emergency disconnecter will cut off power source to avoid accident when truck goes out of control.
- Large pedal allows operator to stand fully inside and well-protected.
- Anti-rolling back brake keeps the truck from skidding down when truck is out of control or travelling on ramp.
- Dual-monitoring power steering, the top safety design (electric steering).

Operation

- With the new design of ergonomical tiller head, all buttons can be reached conveniently & comfortably.
- Thanks to the entry roller design, this truck enters and exits pallets easily.
- With the design of ergonomical tiller and buttons, the truck can be operated safely and comfortably under various applications with excellent working view.
- High speed wheel are chosen as standard configuration.
- Can be functional as low level order picker with coast control option.
- Side & top open battery compartment allows various battery option, convenient for replacement and maintenance.
- Electric power steering, smooth & comfortable (EPS).

Maintenance

- AC traction motor, maintenance free.
- Hour meter and battery indicator remind operator of battery charging.
- Easily remove the back cover by only loosening four bolts; Access to all key components for inspection, maintenance and replacement.
- Vertical motor makes the inspection & service much more convenient.
- Control system allows easy trouble-shooting.
- Low voltage lift cut off design protects the battery.

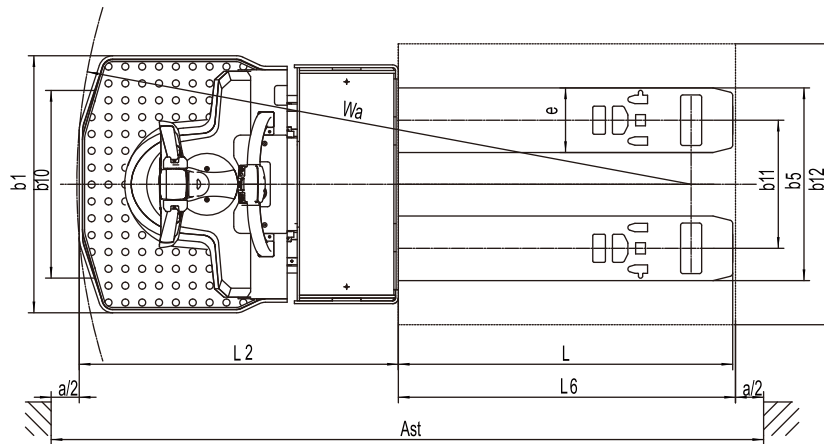
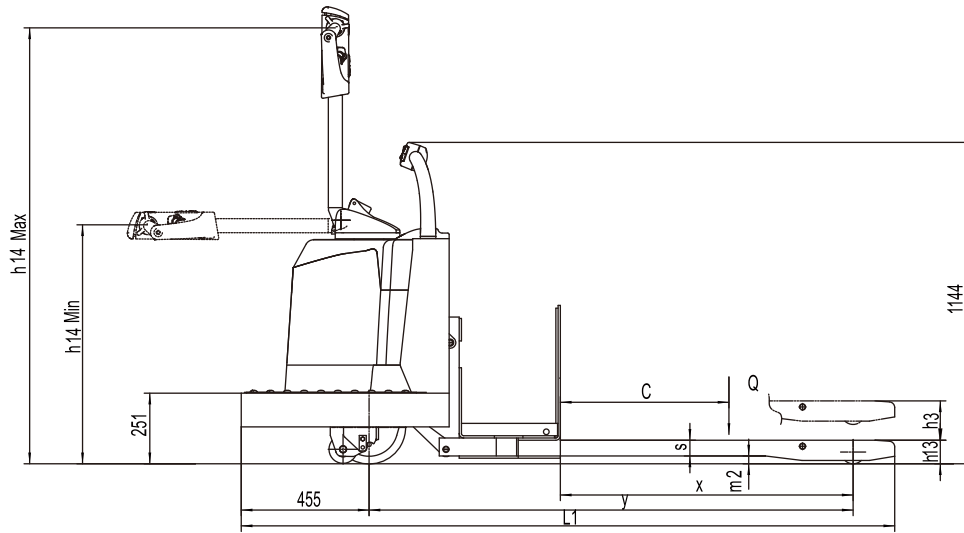


Electric Pallet Truck 3.0/3.5t

EPT20-30RT(S)/EPT20-35RT(S)

Distinguishing mark					
1.1	Manufacturer			EP	EP
1.2	Model designation			EPT20-30RT(S)	EPT20-35RT(S)
1.3	Drive unit			Electric	Electric
1.4	Type of operation			standing	standing
1.5	Rated capacity	Q	kg	3000	3500
1.6	Load center distance	c	mm	600	600
1.8	Load distance	x	mm	1042	1042
1.9	Wheelbase	y	mm	1722	1722
Weight					
2.1	Service weight (include battery)		kg	850	920
2.2	Axle loading, laden driving side/loading side		kg	1110/2740	1260/3160
2.3	Axle loading, unladen driving side/loading side		kg	630/220	690/230
Types,Chassis					
3.1	Tyre type driving wheels/loading wheels			polyurethane/ polyurethane	polyurethane/ polyurethane
3.2	Tyre size, driving wheels (diameter×width)		mm	Φ254x95	Φ254x95
3.3	Tyre size, loading wheels (diameter×width)		mm	Φ82.5x165	Φ82.5x165
3.4	Tyre size, caster wheels (diameter×width)		mm	Φ100x63.5	Φ100x63.5
3.5	Wheels, number driving , caster/loading (x=drive wheels)		mm	1x+2/ 2	1x+ 2/ 2
3.6	Track width, front,driving side	b ₁₀	mm	668	668
3.7	Track width,rear,loading side	b ₁₁	mm	456	456
Dimensions					
4.4	Lift height	h ₃	mm	140	140
4.9	Height drawbar in driving position min./max.	h ₁₄	mm	970/1602	970/1602
4.15	Lowered height	h ₁₃	mm	82.5	82.5
4.19	Overall length	l ₁	mm	2325	2325
4.20	Length to face of forks	l ₂	mm	1135	1135
4.21	Overall width	b ₁ / b ₂	mm	915	915
4.22	Fork dimensions	s/ e/ l	mm	56/230/1190	56/230/1190
4.25	Distance between fork-arms	b ₅	mm	686	686
4.32	Ground clearance, center of wheelbase	m ₂	mm	26.5	26.5
4.34.1	Aisle width for pallets 1000 × 1200 crossways	Ast	mm	2428	2428
4.34.2	Aisle width for pallets 800 × 1200 lengthways	Ast	mm	2544	2544
4.35	Turning radius	Wa	mm	2186	2186
Performance data					
5.1	Travel speed, laden/ unladen	km/ h	km/h	10.5/12	10.5/12
5.2	Lifting speed, laden/ unladen		m/ s	0.03/0.033	0.028/0.033
5.3	Lowering speed, laden/ unladen		m/ s	0.040/0.038	0.040/0.038
5.8	Max. gradeability, laden/unladen			8/16	6/16
5.10	Service brake type			Electromagnetic	Electromagnetic
Electric-engine					
6.1	Drive motor rating S2 60 min		kW	4	4
6.2	Lift motor rating at S3 15%		kW	2.2	2.2
6.3	The maximum allowed size battery		mm	812x330xopen	812x330xopen
6.4	Battery voltage/nominal capacity K5		V/Ah	24/280	24/360
6.5	Battery weight		kg	250	320
Addition data					
8.1	Type of drive control			AC	AC
10.5	Steering type			Mechanical/ Electronic	Mechanical/ Electronic
10.7	Sound pressure level at the driver's ear			74	74

- 1.The parameters in the table are of the standard model. For more information, please contact us.
- 2.The parameters are subject to change without notice.



Option

Options	EPT20-30RT (S) /EPT20-35RT (S)
Fork length	● 850/1000/1300/1450/1700/1800/1900/2000/3000mm
Balance wheel	●
high capacity battery	● 480Ah/700Ah
lateral battery change	●
Cold storage	●
battery indicator without hour meter	●
water auto-filling system	●
Special backrest	● 1220mm (48in)/1520mm (60in)