



EPT20-20RA(S)
EPT25-25RA(S)
EPT20-20RASH
Electric Pallet Truck 2.0/2.5t

Ideal Option for High Intensity & Long Distance Material Handling Tasks;
Driving Wheel Pressure Auto-compensation Patent Makes Operation Comfortable & Smooth;
Dual-Monitoring Electric Steering Offers Safer and Simpler Operation;
Driving Speed up to 12KM/H Greatly Improves the Efficiency of Long-distance Material Handling.

EP EQUIPMENT CO.,LTD
www.ep-ep.com

FEATURE



Safety

- Circular plate design of Front frame, improve the front frame safety when lifting, avoid nipping hands.
- Circular design of back frame surrounded plate, ensure the good trafficability, The accurate design from ground clearance of back truck body avoid hurt of the operator feet.
- Emergency reverse function protect the operator from hurt.
- The emergency connector can be knobbed up to cut off all the power to avoid the sudden accident when the truck is out of control.
- The function of skidproof brake avoid the truck skidding down when truck is out of control or travel on grade.
- Shelves option, avoid cargo falling down.
- Long operator handle, avoid crash between truck and operator.



Operation

- With the new designed ergonomically handle, all buttons are controlled convenient & comfortable.
- Thanks to the long handle design, it decreases the steering force greatly which leads to easy operations.
- Suitable to all popular pallets for its special fork design.
- More than 180° handle rotation range, & compact body, ensure small turning radius & excellent maneuverability.
- Creep speed function: when handle in vertical position, the driving speed will decrease automatically, allowed delicate operation in a confined space.
- Driving Switch for vertical handle (optional)



Performance

- The innovative AC system offers strong power, accurate control, excellent performance.
- High strength vertical gearbox, longer working life.
- Low noisy low fault Hydraulic station, multilayer detection and test cylinder and pipeline ensure the high reliable of hydraulic system.
- High Reliable AMP connector and electric parts. Reliable protect and fixation for all electric wires and cables, reduce the fault of electric parts greatly.
- Once shaping fork, box type frame, Adjustable long connecting rod, ensure the whole truck frame no deformation after long time working.
- Innovative Drive floating operation system (DFA) ensure the truck stable, no slope when steering with high speed (Mechanical steering)

Maintenance

- AC traction motor, maintenance free.
- Hour meter and battery indicator will remind the operator to recharge the battery.
- Dismantle the back cover easily only by loosening two bolts, then access to all key components for inspection, maintenance and replacement.
- Be convenient to add distilled water or electrolyte for battery.
- Motor vertically mounted makes the inspection & service of motor and brake much more convenient than that of motor horizontally mounted.
- Self-diagnostics system shows error code through handset which allow easy trouble-shooting.
- Automatic protection when the voltages of battery is low.

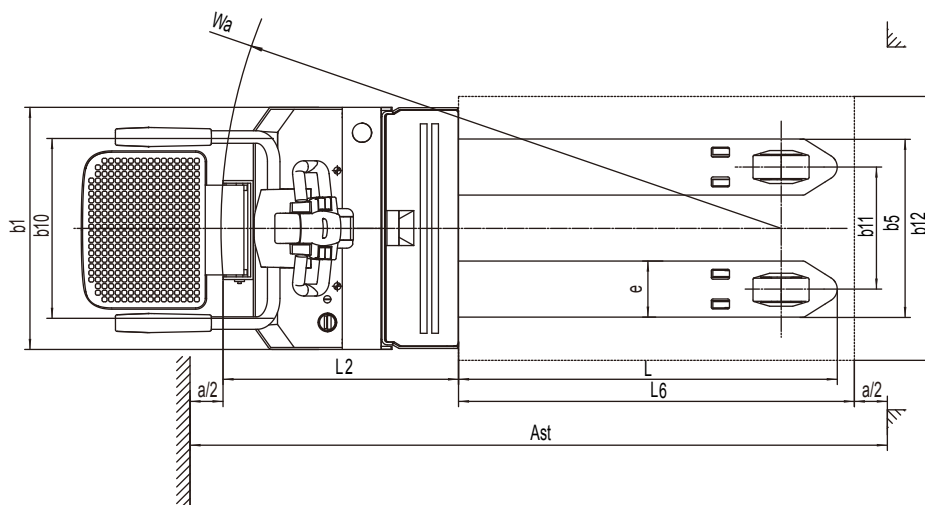
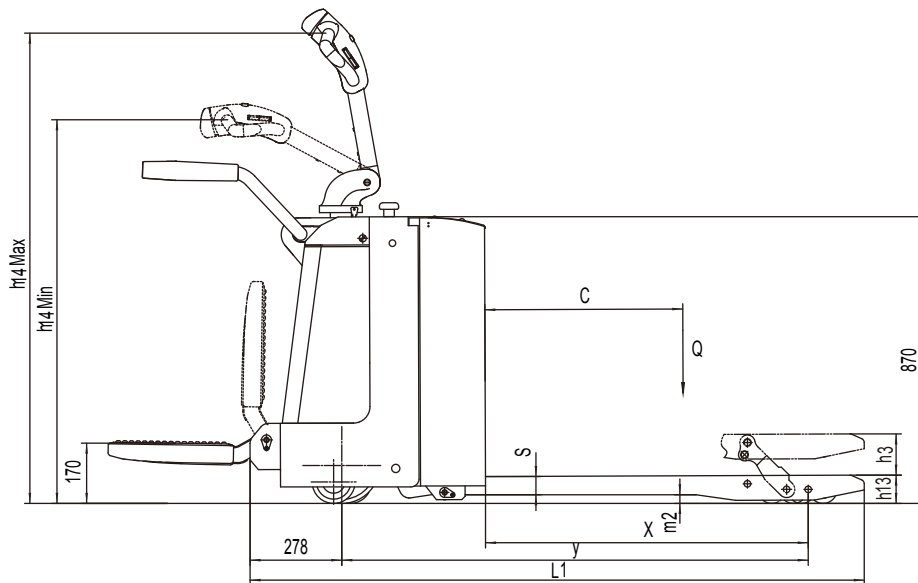


Electric Pallet Truck 2.0/2.5t EPT20-20RA(S)/EPT25-25RA(S)

Distinguishing mark						
1.1	Manufacturer		EP		EP	
1.2	Model designation		EPT20-20RA (S)		EPT25-25RA (S)	
1.3	Drive unit		Electrics		Electrics	
1.4	Operator type		standing		standing	
1.5	rated capacity	Q	kg	2000	2500	
1.6	Load center distance	c	mm	600	600	
1.8	Load distance	x	mm	916 / 982	937 / 1003	916 / 982 937 / 1003
1.9	Wheelbase	y	mm	1418	1438	1418 1438
Weight						
2.1	Service weight (include battery)		kg	670	690	
2.2	Axle loading, laden driving side/loading side		kg	1066 / 1604	1176 / 2014	
2.3	Axle loading, unladen driving side/loading side		kg	546 / 124	556 / 134	
Types,Chassis						
3.1	Tyre type driving wheels/loading wheels			Polyurethane / Polyurethane	Polyurethane / Polyurethane	
3.2	Tyre size, driving wheels (diameter×width)		mm	Φ230x75	Φ230x75	
3.3	Tyre size, loading wheels (diameter×width)		mm	Φ85x70 / Φ83x115	Φ85x70 / Φ83x115	
3.4	Tyre size, caster wheels (diameter×width)		mm	Φ130x60	Φ130x60	
3.5	Wheels, number driving , caster/loading (x=drive wheels)		mm	1 x +2 / 4 / 1 x + 2 / 2	1 x +2 / 4 / 1 x + 2 / 2	
3.6	Track width, front,driving side	b ₁₀	mm	510	510	
3.7	Track width,rear,loading side	b ₁₁	mm	370 / 430 / 515	370 / 430 / 515	
Dimensions						
4.4	Lift height	h ₃	mm	125	125	
4.9	Height drawbar in driving position min./max.	h ₁₄	mm	1150 / 1470	1150 / 1470	
4.15	Lowered height	h ₁₃	mm	85	85	
4.19	Overall length	l ₁	mm	1860	1930	1860 1930
4.20	Length to face of forks	l ₂	mm	710	710	
4.21	Overall width	b ₁ / b ₂	mm	730	730	
4.22	Fork dimensions	s/ e/ l	mm	55 x 170 x 1150	55 x 170 x 1220	55 x 170 x 1150 55 x 170 x 1220
4.25	Distance between fork-arms	b ₅	mm	540 / 600 / 685	540 / 600 / 685	
4.32	Ground clearance, center of wheelbase	m ₂	mm	30	30	
4.34.1	Aisle width for pallets 1000 × 1200 crossways	Ast	mm	1984	1984	
4.34.2	Aisle width for pallets 800 × 1200 lengthways	Ast	mm	2184	2184	
4.35	Turning radius	Wa	mm	1700	1700	
Performance data						
5.1	Travel speed, laden/ unladen	km/ h	km/h	5.5 / 6	5.5 / 6	
5.2	Lifting speed, laden/ unladen		m/ s	0.051 / 0.060	0.055 / 0.060	
5.3	Lowering speed, laden/ unladen		m/ s	0.032 / 0.039	0.030 / 0.039	
5.8	Max. gradeability, laden/unladen			8 / 16	6 / 16	
5.10	Service brake type			Electromagnetic	Electromagnetic	
Electric-engine						
6.1	Drive motor rating S2 60 min		kW	1.5	1.5	
6.2	Lift motor rating at S3 15%		kW	0.84	0.84	
6.3	The maximum allowed size battery		mm	660 x 205 x 660	660 x 205 x 660	
6.4	Battery voltage/nominal capacity K5		V/Ah	24 / 210	24 / 210	
6.5	Battery weight		kg	190	190	
Addition data						
8.1	Type of drive control			AC	AC	
10.5	Steering type			Mechanical/Electronic	Mechanical/Electronic	
10.7	Sound pressure level at the driver's ear			74	74	

1.The parameters in the table are the standard model, for more information please contact us.

2.The parameters are subject to change without notice.



Option

Options	EPT20-20RA/20RAS	EPT25-25RA/25RAS	EPT20-20RASH
Fork length	● 850/1000/1300/1450/1600/1800/2000/2400mm	● 850/1000/1300/1450/1600/1800/2000/2400mm	● 850/1000/1300/1450/1600/1800/2000/2400mm
Fork spread	● 790/840mm	● 790/840mm	● 790/840mm
Driving wheel	● PU	● PU	● PU
high capacity battery	● 240Ah/270Ah/360Ah	● 240Ah/270Ah/360Ah	● 240Ah/270Ah/360Ah
lateral battery change	● 165Ah/210Ah/240Ah	● 165Ah/210Ah/240Ah	● 165Ah/210Ah/240Ah
Cold storage	●	●	●
battery indicator without hour meter	●	●	●
water auto-filling system	●	●	●
Special backrest	● 1220mm (48in)/1520mm (60in)	● 1220mm (48in)/1520mm (60in)	● 1220mm (48in)/1520mm (60in)